

# INNOVATIONS FOR RETINA SURGERY



***Exactly what you're looking for***

*Exactamente lo que estás buscando*

*Exatamente o que você está procurando*

*تناسب تماما ما تتطلع اليه*

*恰如其寻*

*まさにお探しのものを*

*Alles, was Sie brauchen*

*Esattamente quello che stavi cercando*

*Здесь то, что вы искали*

*Exactement ce dont vous avez besoin*

*Exacte quod circumspicias*



## Dual Bore Cannulas

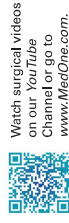
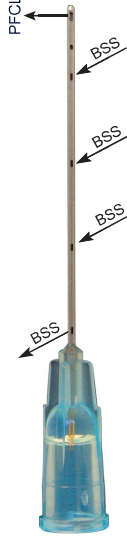
MedOne Dual Bore Cannulas are designed for injection of a liquid such as perfluorocarbon (PFCL) or staining dye, while allowing simultaneous egress of BSS to relieve pressure build up. This enables easy use of surgical liquids while controlling intraocular pressure. During injection, the port nearest to the hub remains outside the eye, allowing the passive drainage of BSS to relieve pressure. The Dual Bore Cannulas utilize a filled hub designed to decrease air bubbles during PFCL injection so the case can be completed without interruption.

### DualBore SideFlo® Cannulas

Injekcinė sunkiųjų skystųjų kaniulė, su pasyvia aspiracija  
DualBore SideFlo® kaniulė

The MedOne DualBore SideFlo® Cannulas are optimized for injection of surgical liquids in small gauge vitrectomy surgery. They are designed to increase safety by using a side port for fluid injection, reducing the possibility of retinal injury caused by a fluid jet stream. Multiple egress vents double the outflow over the original design for faster pressure relief during injection. The all metal exterior enables easy passage through valved entry cannulas.

Patent #937300



Watch surgical videos  
on our YouTube  
Channel or go to  
[www.MedOne.com](http://www.MedOne.com).

p.d.12 3423 DualBore SideFlo® Cannula 23g

p.d.13 3425 DualBore SideFlo® Cannula 25g

p.d.14 3427 DualBore SideFlo® Cannula 27g

## Blunt Tip Cannulas

p.d.11. Kaniulė intraokulinį skysčių irigacijai/aspiracijai.

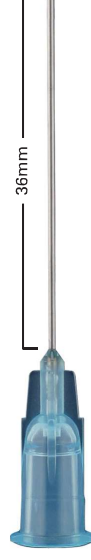
Blunt, thin-walled cannulas are intended for general injection or aspiration. XL cannulas offer increased overall length for easier access in patients with high myopia or longer eyes. The thin wall allows a high flow rate. The luer lock hub enables an easy, secure connection to a backflush handle or syringe.

Vienkartinė buka Blunt Tip arba lygiavertė kaniulė skirta skysčių irigacijai/aspiracijai: 32 mm ilgio 23G;25G;27G ir 36 mm ilgio 23G;25G;27G

Standard Length



XL Length



3214 Cannula 20g  
20g x 32mm

3205 Cannula XL 20g  
20g x 36mm

✓ 3234 Cannula 23g  
23g x 32mm

✓ 3206 Cannula XL 23g  
23g x 36mm

✓ 3225 Cannula 25g  
25g x 32mm

✓✓ 3207 Cannula XL 25g  
25g x 36mm

✓ 3257 Cannula 27g  
27g x 32mm

## DUAL BORE CANNULAS

### Original Dual Bore Cannulas

MedOne coaxial Dual Bore Cannulas have a longer central cannula for injection of surgical liquids with venting through a secondary lumen and a single port near the hub.



## Infusion Cannulas

The thin-walled 20g Infusion Cannulas achieve maximum flow rate during infusion of fluid or gas. The smooth, beveled tip (available in 4mm or 6mm lengths) allows easy insertion through sclerotomy. The green suture flange offers enhanced visibility. The luer lock hub enables an easy, secure connection to the infusion line.



3202 Infusion Cannula 20g (4mm)  
25cm (10in) silicone tube  
with 4mm tip

3203 Infusion Cannula 20g (6mm)  
25cm (10in) silicone tube  
with 6mm tip



## VFI Cannulas

p.d.11. Kaniulė intraokulinį skysčių irigacijai/aspiracijai

MedOne VFI Cannulas utilize an extremely thin-walled tube, allowing injection of viscous fluids such as silicone oil through an entry cannula. The luer lock hub enables an easy, secure connection to a syringe, extension tube, or injection system.

VFI Cannula



PolyTip® VFI Cannula



Vienkartinė buka Blunt Tip arba lygiavertė kaniulė skirta skysčių irigacijai/aspiracijai: 2 mm ilgio 23G;25G;27G

✓ 3235 VFI Cannula 23g  
23g x 2mm

✓ 3226 VFI Cannula 25g  
25g x 2mm

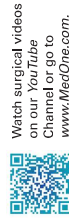
✓ 3273 VFI Cannula 27g  
27g x 2mm

3241 PolyTip® VFI Cannula 23g  
23g x 10mm cannula length provides improved access across the eye and visualization of the cannula tip during use.

## Oil Removal Cannula [Kapran]

MedOne's innovative Oil Removal Cannula enables removal of oil through a sutureless incision. Simply place the trocar cannula using standard technique. Then push the included silicone tube onto the specially-shaped port cannula and aspirate the oil using a standard syringe or pump system. Supplied cap can be used to help maintain IOP after removal of oil.

Developed in cooperation with Ziya Kapran, MD



Watch surgical videos on our YouTube Channel or go to [www.MedOne.com](http://www.MedOne.com).



Uniquely shaped 23g port cannula



Luer lock tubing/connector attached



Cap to help maintain IOP after oil removal



**MedOne**  
[www.MedOne.com](http://www.MedOne.com)

## VFI Infusion Cannulas

VFI Infusion Cannulas can be inserted into an entry cannula and will remain attached via the silicone fitting at the tip. The self-retaining feature allows bimanual surgery during oil fill in small gauge cases. The VFI Cannula can be used to infuse both BSS and silicone oil during a case. Ideal for PFO-to-silicone oil exchange cases. Not compatible with Alcon valved trocar cannulas.

3246 VFI Infusion Cannula 23g

3245 VFI Infusion Cannula 25g

3301 VFI Infusion Cannula 27g



## Viscous Fluid Infusion Cannulas

Our Viscous Fluid Infusion Cannulas feature a thin-walled, high-flow cannula tip and high-pressure tubing that allows quick injection of silicone oil. The VFI Cannula can be used to infuse both BSS and silicone oil during a case. The green flange offers enhanced visibility during suturing. The luer lock hub enables an easy, secure connection to the infusion line.

3200 Viscous Fluid Cannula 20g (4mm)  
16cm (6in) high pressure tube with 4mm tip

3201 Viscous Fluid Cannula 20g (6mm)  
16cm (6in) high pressure tube with 6mm tip



4mm

6mm



**MedOne**  
[www.MedOne.com](http://www.MedOne.com)

## MicroPicks

MedOne MicroPicks are intended for lifting the edge of ILM or other retinal membranes for subsequent peeling with forceps. The pick is angled 45°, 0.5mm from the tip. It can be used for aspiration or injection. The luer lock hub enables an easy, secure connection to a backflush handle or syringe.



MicroPick Tip

**3229 MicroPick 23g**  
23g x 32mm

**3204 MicroPick 25g**  
25g x 32mm

## MVR Knives

MedOne MVR Knives are sharp and consistent, two of the most important attributes of a surgical knife. The diamond architecture of the blade tip ensures a clean, precise incision every time. The 20g MVR (3266) creates a sclerotomy for 20g instruments. The 23g MVR (3268 or 3269) can be used to create sclerotomies for use with 23g cannula systems, but will not fit through an entry cannula.



## Narrow 23g MVR

Designed specifically to fit through a 23g entry cannula, this MVR can be used as a knife or a pick through an existing 23g port.



**3266 AdvantEdge® MVR Knife 20g**

**3268 AdvantEdge® MVR Knife 23g**

**3269 AdvantEdge® MVR Knife 23g (Angled)**

**3272 AdvantEdge® MVR Knife 23g (Narrow)**

## Backflush Handle

Our Backflush Handle is designed to maximize performance and ergonomic comfort. The short handle provides excellent maneuverability in the surgical field, especially around wide-field viewing systems. The grip area is designed for precise control in delicate procedures. The luer lock fitting enables a quick, easy connection with any luer-compatible cannula, including all MedOne cannulas. The removable plug allows use with active or passive aspiration.



**3228 Backflush Handle**

## Backflush Instruments

Backflush Instruments combine our ergonomic handle with our most popular cannulas in one convenient instrument. The instruments are available with a blunt tip cannula or a 0.75mm silicone tip, allowing easy passage through valved entry cannulas. The removable plug allows use with active or passive aspiration.

**3286 Backflush Cannula 23g**

**3290 Backflush FlexTip™ 23g**

**3295 Backflush Cannula 25g**

**3296 Backflush FlexTip™ 25g**

**3276 Backflush Cannula 27g**

**3278 Backflush FlexTip™ 27g**



p.d.10. Aspiracijos antgaliui (fleitos) 27G prie Constellation Vision aparato Vienkartinis pasyvio/aktyvio aspiracijos antgaliis, mikštu galu, skirtas dirbti arti tinklainės (Advanced Backflush DSP tipo), 27G.

p.d. 24. Sunkusis skystis  
F-Decalin 7ml



- Contains more than 98% Perfluorodecalin. **Perfluorodecalin, 7ml sterilus flakonas**
- Purified Perfluorodecalin sterile and apyrogenic. **V**
- Transparent, colourless and optically clear
- Both products have clear differentiation with high specific gravity
- Presented in 5-7-10 ml vials or glass syringe depending on the surgeons preferences
- Prepared in a full automated system
- Has a colour code on the packet side to be able to store and recognize easily

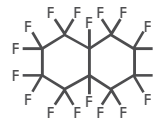
Perfluorodecalin	
Odour	Odourless
Boiling Point (°C)	141 - 143
Density (kg/l)	1.92 - 1.94
Viscosity (cSt)	2.57 - 2.61 cSt (5 mPa.s)
Refractive Index	1.313 - 1.314
Surface Tension (mN/m)	17.6 - 17.8
Interfacial Tension (mN/m)	51 - 52
Vapour Pressure (mbar)	8.8

Perfluorodecalin	
5 ml Vial	VT5D
7 ml Vial	VT7D <b>V p.d.24</b>
10 ml Vial	VT10D
with Dual Bore Canuula	VTDI
5 ml Syringe	VTSD5
7 ml Syringe	VTSD7
10 ml Syringe	VTSD10

## Product Properties

Product description: Presented in Glass Syringe or Glass Vial.

Store at room temperature



## Dual Bore Cannula

**VCDI00** Dual Bore Cannula 25G

**VCDI01** Dual Bore Cannula 23G

**VCDI02** Dual Bore Cannula 20G



## Dual Bore Cannula, Polyimide Tip

**VCDI00P** Dual Bore Cannula, Polyimide Tip 25G

**VCDI01P** Dual Bore Cannula, Polyimide Tip 23G

**VCDI02P** Dual Bore Cannula, Polyimide Tip 20G

